

The SECURFOLD

SLIDING-FOLDING SHUTTER DOOR

DESCRIPTION

A heavy duty door, manufactured from vertically hinged folding leaves and capable of withstanding 150mph gusts of wind. Ideal for large openings up to 60m wide or 12m high. Doors can be made with cut outs for crane beams and monorails.

TOP TRACK

The top track supports the weight of the door and is formed from heavy gauge rolled steel strip. It is fixed to the lintel with fabricated mild steel brackets where required and is galvanised or painted depending on the door specification and size.

PICKETS

Pickets are formed from galvanised cold rolled steel and form the main framework for the door on the inside of the building. The top of each picket is supported from the top track with a hardened steel, grease sealed, multi-ball roller. The bottom of each picket runs within the bottom track and gives the door its immense strength in high winds.

LEAVES

The leaves, which are 230mm (9") wide, are formed from cold roller galvanised steel strip and are ribbed for aesthetic purposes and extra strength. The gauge varies to suit the size of the door.

HINGE STRIP

The hinge strip is a capped, cold rolled, galvanised steel outer channel that allows the leaves to hinge vertically and move with the picket section when the door is operated.

LATTICE

The lattice is a unique shape for extra strength and is formed from heavy gauge cold rolled galvanised steel strip. The lattice is bolted onto the pickets and controls the sideways movement of the door and prevents the door from flattening out in high winds.

BOTTOM TRACK

The standard bottom track, which is set into the floor, is manufactured from heavy gauge cold rolled steel strip and runs the full width of the door.

LEADING EDGE

The leading edge is for accommodating hasps and staples, handles etc. and stiffens up the closing edge of each door. It is formed into a deep channel from heavy gauge galvanised steel strip.

SOFFITS & SIDE CLOSURES

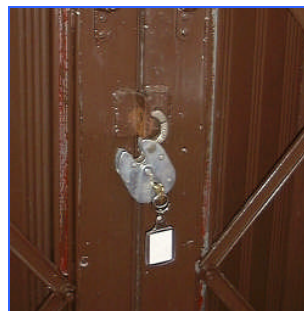
Heavy gauge galvanised steel strip is press braked to the required size and shape and fixed to the doors and door jambs to give maximum security.

HARDWARE

Each door has a bow handle inside and out and is fitted with a heavy duty hasp and staple to take the customer's own padlock. Normally fitted on the inside unless otherwise specified.



Sliding-Folding Shutter Door



Hasp & Staple with Padlock



Motor with Manual Override

ELECTRIC OPERATION

Electrical operation can be provided by means of a 415v three phase geared electric motor with open/close/stop operation by means of a push button control panel. A manual disconnection device allows the door to be hand operated in case of power failure. Each motor unit is complete with torque limiter that stops the door at each end of its travel.

OPTIONAL FEATURES (available at extra cost)

- Windows
- Locks
- Weather canopies
- Plastisol HP200 coating to door leaves & canopies
- Special application bottom tracks
- Cut-outs for runway beams and monorails
- Special motors and control panels
- Additional electrical equipment (safety edge, induction loop etc)
- Wiring and commissioning.

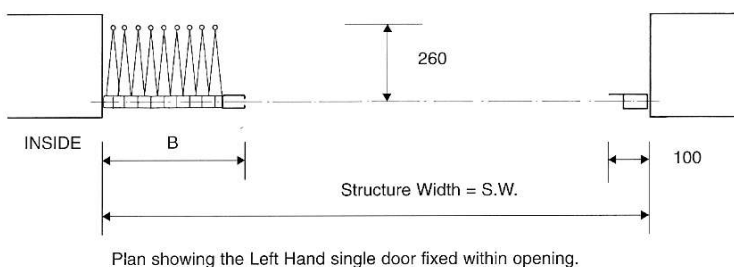
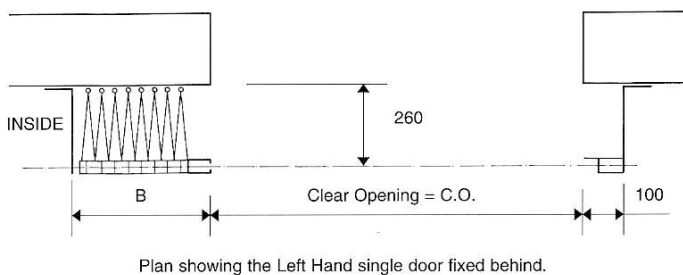
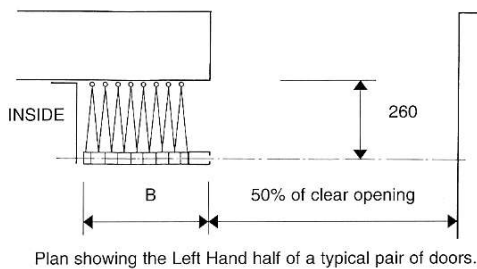
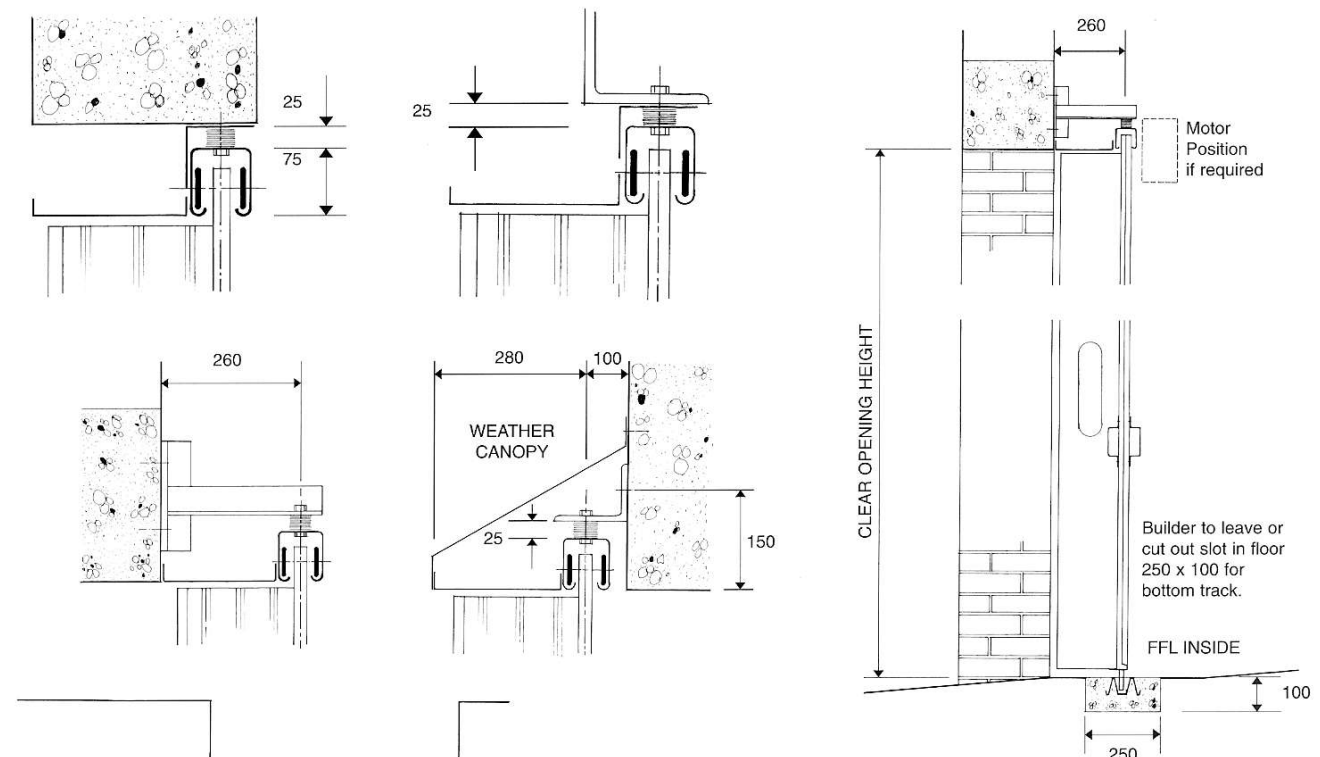


EMMERSON INDUSTRIAL DOORS LIMITED

Enterprise Way, Sherburn in Elmet, Leeds. LS25 6NA Tel: 01977 685566 Fax: 01977 681981

TYPICAL INSTALLATION LAYOUTS

Doors can be fitted inside, outside or within the opening and can be arranged as opening to one side: Left hand or Right hand, or opening to both sides as a pair.



BUNCHING CHART FOR 230mm LEAF			
For Single Doors up to 6000 high x 10, 100 clear width			
Door Width Overall SW	Bunching Size B	Clear Opening CO	Number of Leaves in Pairs
1700	225	1475	4
2100	250	1850	5
2500	275	2225	6
2900	300	2600	7
3300	325	2975	8
3700	350	3350	9
4100	375	3725	10
4500	400	4100	11
4900	425	4475	12
5300	450	4850	13
5700	475	5225	14
6100	500	5600	15
6500	525	5975	16
6900	550	6350	17
7300	575	6725	18
7700	600	7100	19
8175	700	7475	20
8575	725	7850	21
8975	750	8225	22
9375	775	8600	23
9775	800	8975	24
10175	825	9350	25
10725	1000	9725	26
11125	1025	10100	27

A pair of doors can be 20, 200 clear width.
For doors larger than the above sizes please contact our technical department.



EMMERSON INDUSTRIAL DOORS LIMITED

Enterprise Way, Sherburn in Elmet, Leeds. LS25 6NA Tel: 01977 685566 Fax: 01977 681981