

The MAINSTAY

SECURITY / EMERGENCY EXIT STEEL DOOR SET

DESCRIPTION

A substantially constructed steel security / emergency exit door, complete with frame, to suit individual opening requirements.

This door can be fitted with a variety of locking devices for security, and appropriate hardware to operate as an emergency exit door.

The door leaf is manufactured with an internal frame of 31.8 x 31.8 x 1.6mm ERW box section, with 2mm mild steel plate to form the skin to both internal and external face.

The leaf is mounted in a purpose made frame manufactured from 100 x 50 x 3.2mm mild steel RHS, with 25 x 23 x 3mm mild steel angle to form the slam rebate.

Threshold constructed from 100 x 6mm mild steel flat.

Door leaf and frame have a primed finish as standard, for painting in situ by others.

GENERAL CONSTRUCTION

- Heavy duty weld-on hinges
- Clapping lath
- Heavy duty hinge bolts
- Security / retaining Z-plates

SECURITY HARDWARE

- S1 - Single 5-Lever Locking
- S2 - Double 5-Lever Locking
- S3 - Triple 5-Lever Locking
- S4 - Euro Cylinder Locking

See separate data sheet for more details...

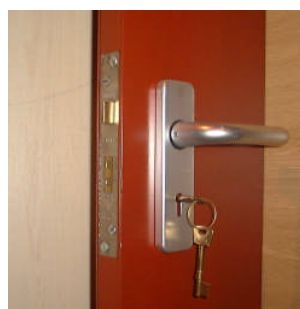
EMERGENCY EXIT HARDWARE

- E1 - Push-bar Rim Panic Latch
- E2 - Push-bar Vertical Panic Bolt
- E3 - Push-Bar Mortice Panic Night-latch
- E4 - Double Door Panic Set

See separate data sheet for more details...



Mainstay Door - Security Application



*Security Option S1
Single 5-Lever Locking*



*Emergency Exit Option E1
Push-bar Rim Panic Latch*

OPTIONAL EXTRAS

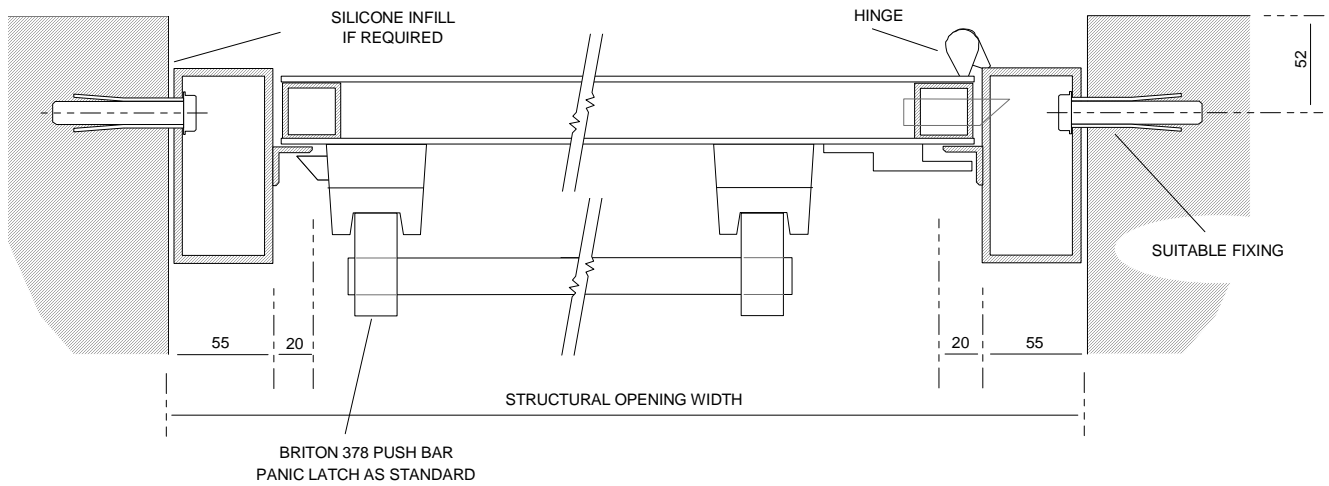
- Heavy duty overhead door closer
- Door viewer
- Window/glazed panel with armoured glass
- Rockwool infill
- Louvered panel (full or half leaf)
- Infill panel above or to side of door leaf
- Powder coated finish



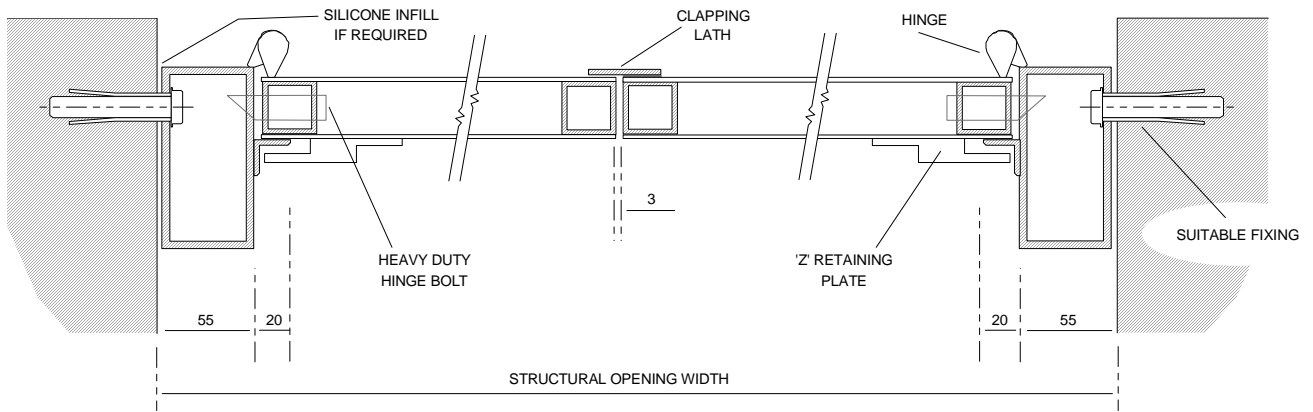
EMMERSON INDUSTRIAL DOORS LIMITED

Enterprise Way, Sherburn in Elmet, Leeds. LS25 6NA Tel: 01977 685566 Fax: 01977 681981
e-mail: sales@emmerson-doors.co.uk web: www.emmerson-doors.co.uk

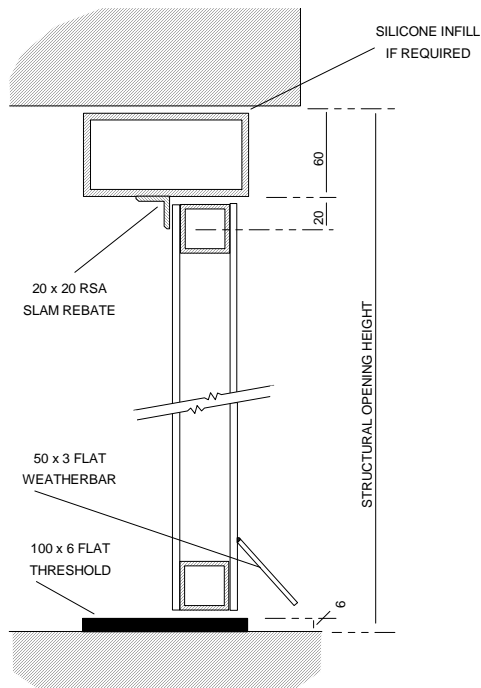
PLAN SECTION – SINGLE LEAF DOOR



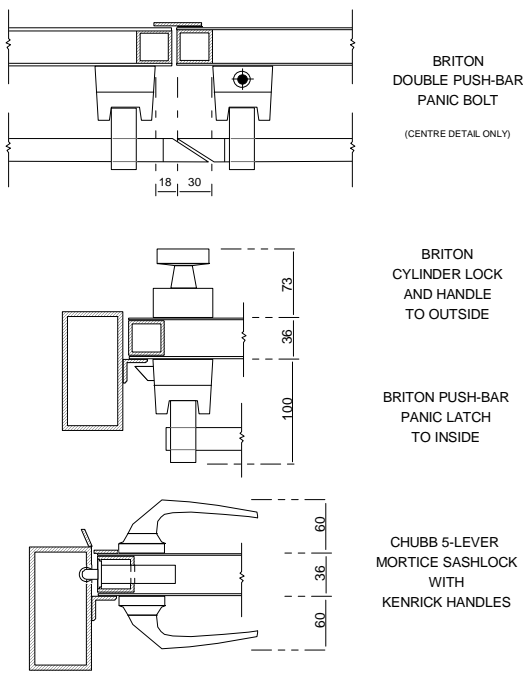
PLAN SECTION – DOUBLE LEAF DOOR



END SECTION



SELECTED LOCKING DETAILS



EMMERSON INDUSTRIAL DOORS LIMITED

Enterprise Way, Sherburn in Elmet, Leeds. LS25 6NA Tel: 01977 685566 Fax: 01977 681981
e-mail: sales@emmerison-doors.co.uk web: www.emmerison-doors.co.uk